

Cement Board and Fiber Cement Backerboard Fasteners



DESCRIPTION

Patented Cement Boards Screws with Serrated Head for Flush Seating

Backer-On® cement screws are designed for attaching Hardie-Backer® cement board and Rock-On® cement board screws are designed for attaching Durock® cement board to wood or light gauge steel studs. Patented design and ANSI compliant making these perfect for use in high moisture areas such as bathrooms and kitchen.

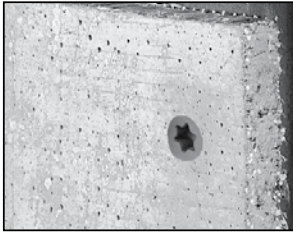
ADVANTAGES

- Serrated head designed to drive flush even at an angle
- Star drive with T-25 bit and Stikfit™ for easy one-handed installation and eliminates cam-outs
- Hi-Lo threads for Rock-On and Single Threads for Backer-On are designed for quick and smooth drives into cement boards
- Sharp points offer immediate pick-up and eliminates pre-drilling
- Patented design allows attaching close to edge on cement board, drastically reducing fractures or blow outs
- Corrosion resistance with Climacoat finish will prevent rust from bleeding into tile
- Comply with ANSI A108.11 standards as specified by cement board manufacturers – alternative options such as roofing nails and generic drywall screws are typically not specified by manufacturers nor are they ANSI compliant

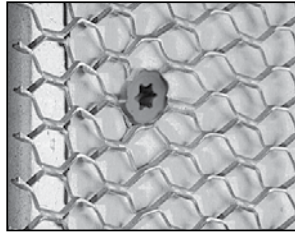
INSTALLATION INSTRUCTIONS

1. A standard screwgun with a depth sensitive nosepiece should be used to install cement board fasteners. For optimal fastener performance, use a screwgun with adjustable depth of drive and variable RPM (0-2000).
2. Adjust the screwgun nosepiece to properly seat the fastener.
3. Use enclosed T-25 Star Drive bit to drive in the cement board - worn or damaged bit tips should be replaced.
4. The fastener is fully seated when the head is flush with the work surface.
5. Overdriving may result in torsional failure of the fastener or stripout of the substrate.
6. Steel stud attachment - Fastener must penetrate a minimum 3/8" beyond steel for optimal performance"
7. Wood stud attachment - Fastener must penetrate 1" into wood stud or beyond plywood for optimal performance"

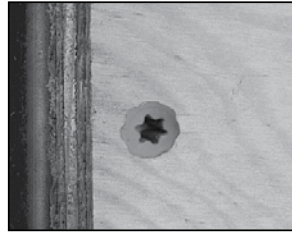
APPLICATIONS



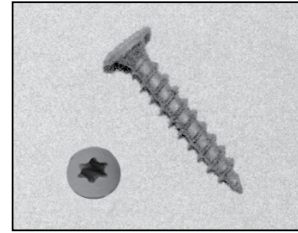
Cement-type boards or any dense sheathings to steel or wood studs.



Wire lath to steel or wood studs.



Plywood to steel or wood studs.



Hardie Fiber Cement Backerboard

SELECTION CHART

Hi-Lo Rock-On Fasteners



PART NUMBER	LENGTH	HEAD STYLE	MATERIAL THICKNESS	BOX QTY	APPLICATIONS
23301C	1-1/4"	T-25 (Bit Included)	1/4" Cement Board	185	- Cement Board to wood or light gauge steel 26-20 gauge
23306C	1-1/4"	T-25 (Bit Included)	1/4" Cement Board	750	
23311C	1-5/8"	T-25 (Bit Included)	1/2" Cement Board	140	

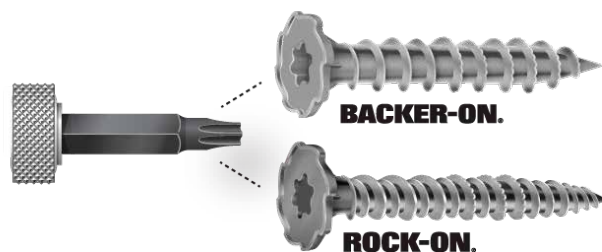
Backer-On Fasteners



PART NUMBER	LENGTH	HEAD STYLE	MATERIAL THICKNESS	BOX QTY	APPLICATIONS
23401C	1-1/4"	T-25 (Bit Included)	1/4" Cement Board	185	- Backer Board to wood or light gauge steel 26-20 gauge
23406C	1-1/4"	T-25 (Bit Included)	1/4" Cement Board	750	
23411C	1-5/8"	T-25 (Bit Included)	1/2" Cement Board	140	

Accessories

PART NUMBER	DESCRIPTION	BOX QTY
24000C	T-25 Stikfit Bit (2/PK)	12 Packs



Rock-On, Backer-On Fasteners

PERFORMANCE TABLES

Sheet Steel Gauges

GAUGE NO.	12	14	16	18	20	22	24	26
Nominal Decimal Equivalent (Inch)	.105	.075	.060	.048	.036	.030	.024	.018

Pullout Values

FASTENER	STEEL GAUGE (Lbs.)							
	26	24	22	20	18	16	14	12
Hi-Lo	163	242	314	370	-----	-----	-----	-----
Backer-On	271	371	457	615	-----	-----	-----	-----

Wood Embedment

#2 SPF 2 x 4	1/2"	3/4"	1"	1-1/4"
Hi-Lo	223	312	555	676
Backer-On	-----	436	780	-----

The values listed are ultimate averages achieved under laboratory conditions and apply to Buildex manufactured fasteners only. Appropriate safety factors should be applied to these values for design purposes.